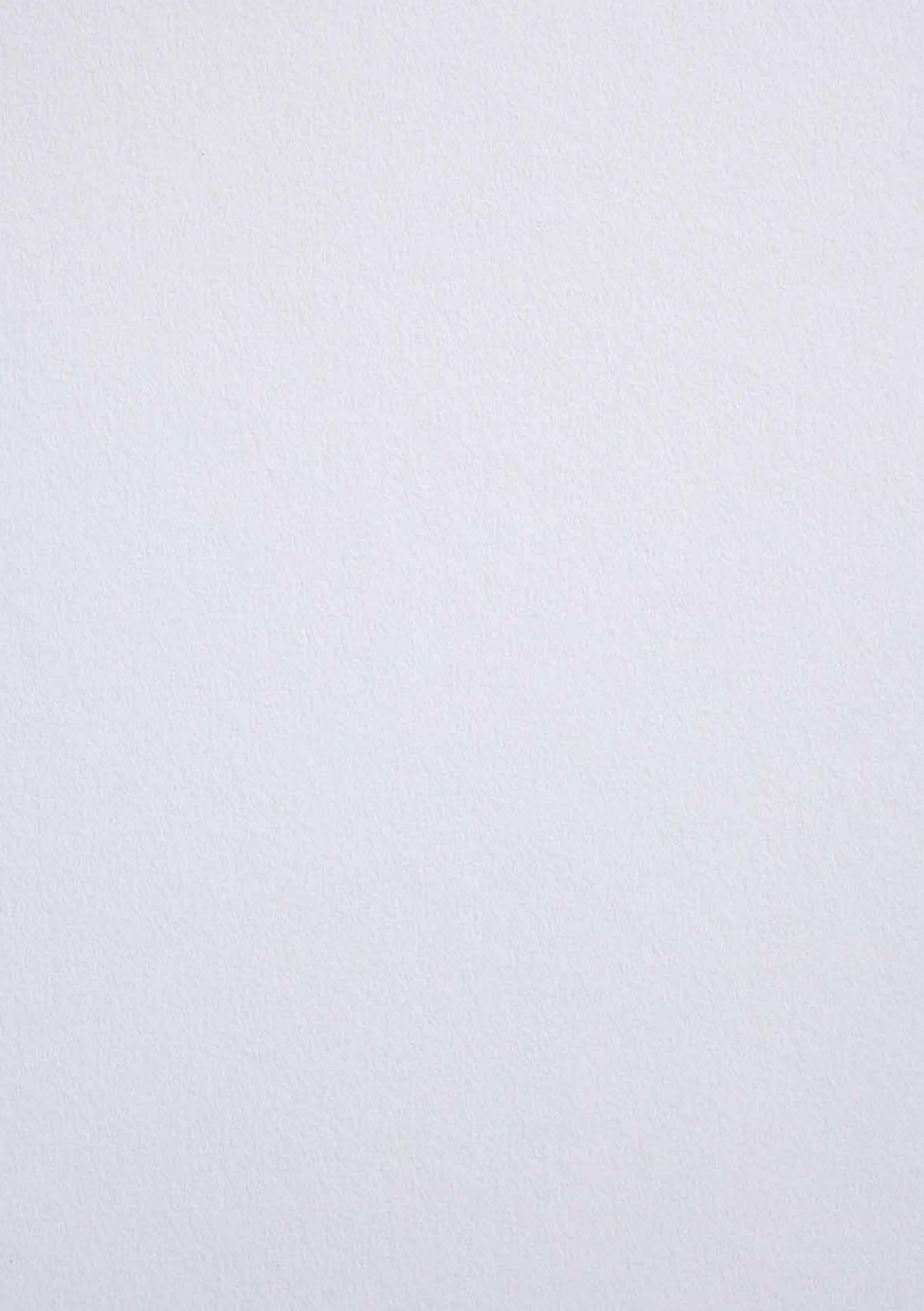


PLANETA ESTATE  
HOSPITALITY



# PLANETA ESTATE

## HOSPITALITY

A journey round Sicily, in the Planeta style. A wine resort immersed in vineyards at Menfi with its restaurant and beach club, an apartment hotel in the heart of the historic centre of Palermo, an artist's house at Sambuca di Sicilia and our wineries. Places which epitomise the essence of our hospitality, the worth of which inspires us as a family and as a business and which allows us to best express our great love for Sicily. Every day this island manages to surprise us with its wealth of emotions and the wish to share them has motivated us to create our hotels and our estates as extensions of our home. And to welcome everyone who, like us, is always in search of beauty.

# PLANETA

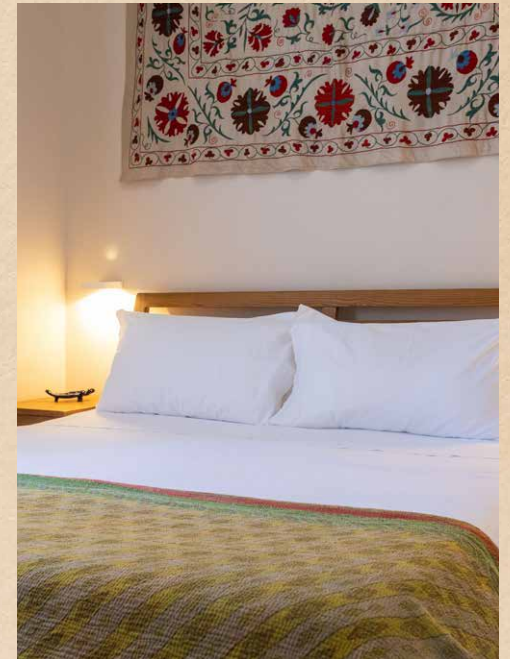


In the heart of Palermo's historic centre and its lively crossroads of history and age-old cultures, the apartments in the family palazzo represent a true entry for every traveller who arrives in Sicily. With this provision of an apartment hotel, we can offer our guests the essence and uniqueness of Planeta hospitality. The comfort and welcome that guests will enjoy is expressed in the natural materials and warm colours typical of Mediterranean culture.



PALAZZO PLANETA  
PALERMO





La Foresteria stands on a hill with panoramic views over sunsets and the sea. Surrounded by a garden of herbs and immersed in the vineyards and olive groves of Menfi, our wine resort is a welcoming rural dwelling for those wishing to treat themselves to a holiday distinguished by wellbeing and enjoyment of a beautiful countryside. The fourteen rooms, furnished in a warm and Mediterranean style, are grouped around private terraces facing the garden, the infinity pool and the vineyards; an invitation to live to the full the sensory wealth of nature and of food and wine, in the true style of Sicilian hospitality.



LA FORESTERIA  
WINE RESORT  
MENFI







The restaurant of La Foresteria is where the traditional cooking of our family has evolved in a contemporary manner. Taste, freshness, the study of regional excellence, collaboration and co-operation with small producers, farmers and local craftsmen, careful and intensive use of herbs, flowers and garden produce make up the mosaic of La Foresteria's cuisine.



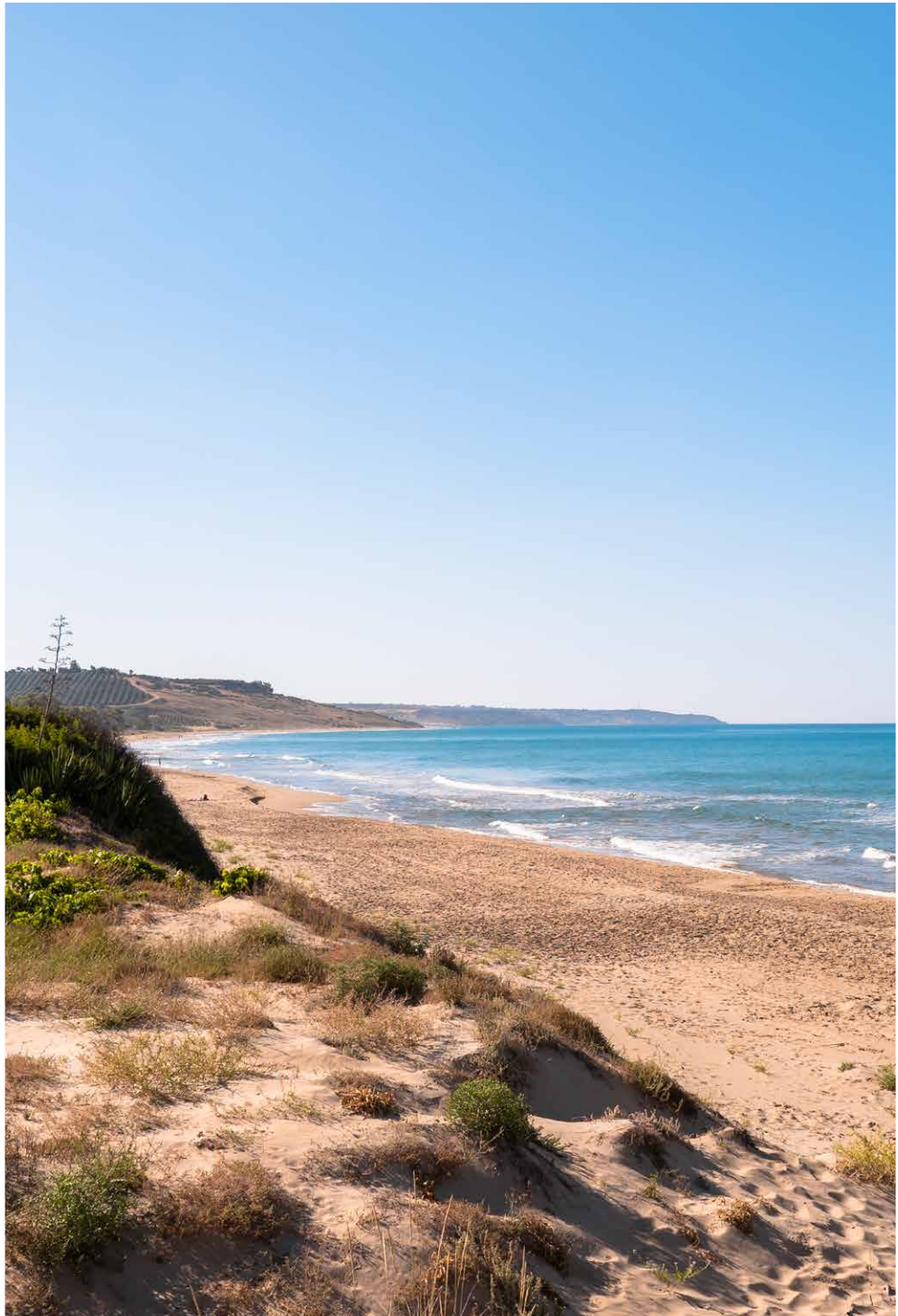
LA FORESTERIA  
RISTORANTE  
MENFI





The Beach Club sits on the dunes of Menfi's beach and is totally immersed in an oasis of unspoilt nature among reeds, pines and marine lilies. Insula is there to welcome you from morning till sunset with elegance and relaxation. An island sheltered from all providing a place of peace and gastronomic delight, with food resulting from antique local traditions and representing a unique cultural melting pot.









The Planeta family's hospitality finds a home in the heart of Sambuca di Sicilia's historic centre, in an exclusive space within the palazzo of the Museo Panitteri. The apartment has been transformed into an Artist's House, where art and design together create a space of special wellbeing. Casa Panitteri provides the ideal stay to visit Sambuca di Sicilia, Borgo dei borghi 2016, and our estate of Ulmo on Lake Arancio.



CASA PANITTERI  
SAMBUCA DI SICILIA





At Buonivini we have renovated the Case Sparse, small country dwellings of the early 1900's, restored according to local architecture and perfectly integrated into the landscape of the vineyards. Sustainability and hospitality in an informal atmosphere and attention to nature since their beginning have defined the furnishing projects of Costanza Algranti, who has recycled and transformed abandoned material into new, functional and comfortable objects, each with a story to tell. This is the ideal place for whoever loves silence and nature, Sicilian baroque art, traditions linked to the land, wine and local cooking.



CASE SPARSE  
NOTO





We have always combined our passion for Sicily with the wish to warmly welcome anyone wishing to discover it. Our wineries have never been places dedicated only to the production of wine but also spaces for hospitality linked to cookery, to nature and to culture. We have constructed the hospitality within our wineries of Menfi, Vittoria, Noto, Etna and Capo Milazzo as a real collection of experiences related to each region and to every guest, bound to the singularity of each place, to the wines and to the beauty of the countryside.

# PLANETA ESTATE

## HOSPITALITY







Vineyards, olive groves and nature in its amazing splendour embrace the ancient baglio of the Ulmo estate, the place of origin of the Planeta family and the beginning of our wine-making history. Just a few metres from Lake Arancio, this winery caused a revolution in the world of wine in a region selected for its potential and its versatility. Here you can explore the Chardonnay, Grecanico and Nero d'Avola vineyards, taste our wines and then venture on foot along footpaths through the woods.



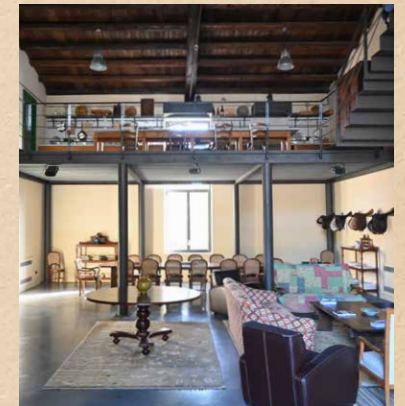


A few kilometres from Ulmo Monte Cirami is the winery entirely devoted to the organic production of the four red wines of Planeta's high quality range. (This area is entirely devoted to the organic production of the four red wines in the high quality range.) Monte Cirami is an extraordinary place from the aspect of landscape, and represents the age-old harmony between man and nature which defines our approach to agriculture. Here we have created a contemporary winery perfectly balanced between traditional aesthetics and the most innovative production techniques.



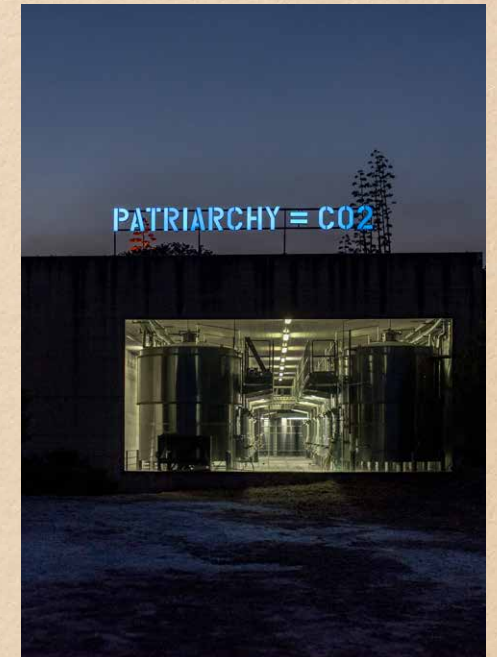


Vittoria, land of Cerasuolo and the red seemingly marine sands, is one of the places nearest to the history and long agricultural traditions of the family. The Dorilli estate is in the heart of the area, surrounded by Nero d'Avola and Frappato vines, and with the historic winery within the baglio, the large rooms and gardens which we maintain today for hospitality. With its typical Liberty style, the whole estate expresses the fascination of great elegance together with the unmistakable atmosphere of old country mansions.



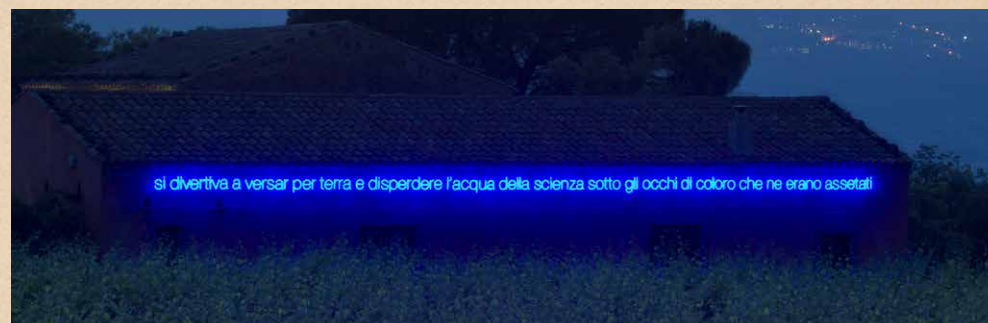


Buonivini is located in the heart of Val di Noto, a UNESCO heritage site. The historic name of the district reveals its ancient wine-making traditions; we came here for Nero d'Avola, undisputed prince of Sicilian grape cultivation. The estate stretches over gentle hills shaped by the geometry of vineyards which alternate with young almond trees and majestic carobs. A visit to the estate extends through past and present to discovery of the Cantina Invisibile, an architectural project harmoniously integrated in the landscape, and the Press, a building where wine was produced in the past.





In an area of irresistible and magnetic fascination, formed by the fiery energies of the volcano, Planeta's Etna idea took shape. Contrada Sciaranuova lies on the northern slopes of Etna, embedded among the lava flows resulting from the decade-long eruption of 1614. Carricante and Nerello Mascalese vines grow here. Also here, thanks to a carefully conservative restoration, the antique buildings on the estate have become the heart of Planeta's hospitality on Etna. Sciaranuova is one of the privileged places of our cultural projects; a small natural amphitheatre is to be found among the typical terraces of lava stone with a contemporary art work dedicated to Ettore Majorana, produced by the artist Claire Fontaine.





La Baronia is a project dense with memories, beauty, social content and sustainable viticulture. Since 2011 we are responsible for the agricultural management of the Fondazione Lucifero's property, a place of breathtaking beauty, among vines and natural footpaths, from which the Eolian archipelago can be admired. We have recovered a rare local grape variety, Nocera, and we produce Mamertino, the wine beloved of Julius Caesar, in the tiny 'Collapsible Winery' constructed with regard to the landscape. Income deriving from the 8 hectares of vines contribute to the activities of the Foundation in support of children.





PLANETA ESTATE  
HOSPITALITY

Email:  
[reservation@planeta.it](mailto:reservation@planeta.it)

Phone:  
+39 0925 1955460 - dig 1



